

HISTORIC DALLAS

FALL Fest

sponsored by
Paulding Fine Arts Association

Aerial Map of Downtown Dallas



Red - Food Trucks



Blue - 2 Stages of Entertainment

Bring your Lawn Chair and Enjoy
FREE Entertainment from 10 am - 4 pm



Orange - Festival Area on Main St. & Courthouse Sq.

Main St. will be Closed during festival
Festival is from Memorial Dr. to Cooper Ave.



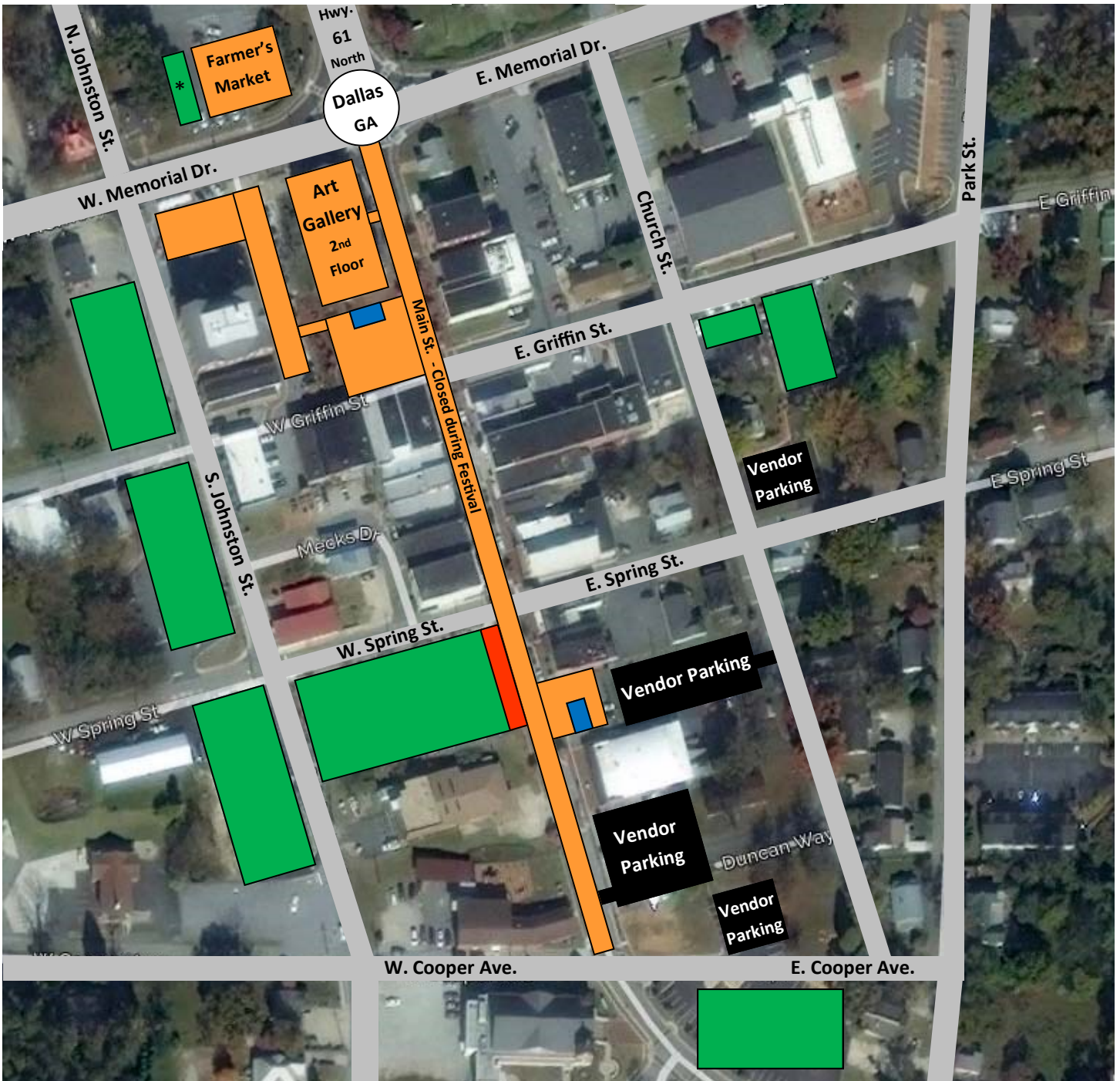
Green - Visitor Parking

Public parking; College and Church parking
* Parking available at Farmer's Market from 2-4 pm



Black - Vendor Parking

Next to and behind W&R Pharmacy and on Church St.
Drop off items in morning; then park car in Vendor parking
Please Do NOT park in Visitor parking



Directions to the Paulding Fine Arts Annual FALL FEST

Use this address in your **GPS** for parking **North or West of festival**:

[11 Courthouse Sq, Dallas, GA](#)

From North of Dallas:

Hwy 61 south to public parking by Regions Bank (corner of Main St. and Memorial Dr.).
If that is full, go down S. Johnston St. to public parking by Dallas New Era
(corner of Spring St. and Johnston St.) and it is fine to park in college parking during the festival.

From West of Dallas:

Hwy. 278 east, left on Buchanan St., right on Memorial Dr., right on S. Johnston St. to public parking
by Dallas New Era (corner of Spring St. and Johnston St.) or college parking on S. Johnston St.

Use this address in your **GPS** for parking **South or East of festival**:

[401 Main St., Dallas, GA](#)

From East of Dallas:

Hwy 278 west, right on Hwy 61, left on Henry Holland Dr. (by Henderson Collision), right on Hardee St.
which turns into Main St. to parking by First Baptist Church or parking behind Sals and W&R Pharmacy
on Church St.

From South of Dallas:

Hwy 61 north, cross over Hwy 278, left on Henry Holland Dr. (by Henderson Collision), right on Hardee St.
which turns into Main St. to parking by First Baptist Church or parking behind Sals and W&R Pharmacy
on Church St.



Parking in Dallas for the Event

Public parking next to the Regions Bank: 160 Confederate Ave.
College parking lots off S. Johnston St.
First Baptist Church of Dallas: 401 Main Street
Public Parking lot near Dallas New Era: 121 W Spring St
Parking lots Behind Sals Pizza and W&R Pharmacy
Parking lots on Church St. and E. Cooper Ave.
Remember Main St. will be CLOSED from Memorial Dr. to Cooper Ave.

More information on our website: [**http://www.pauldingfinearts.org/fall_fest.html**](http://www.pauldingfinearts.org/fall_fest.html)